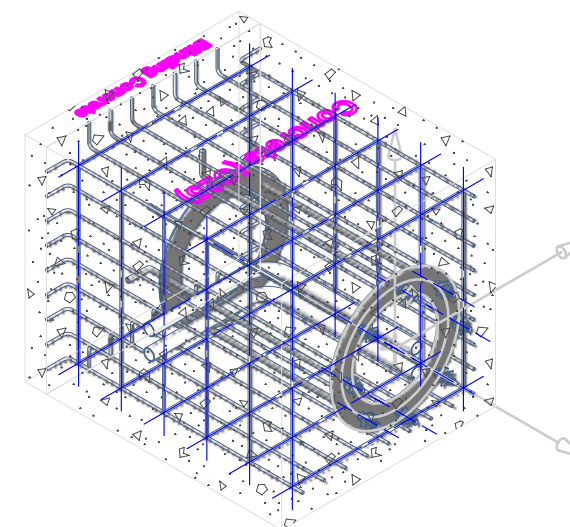
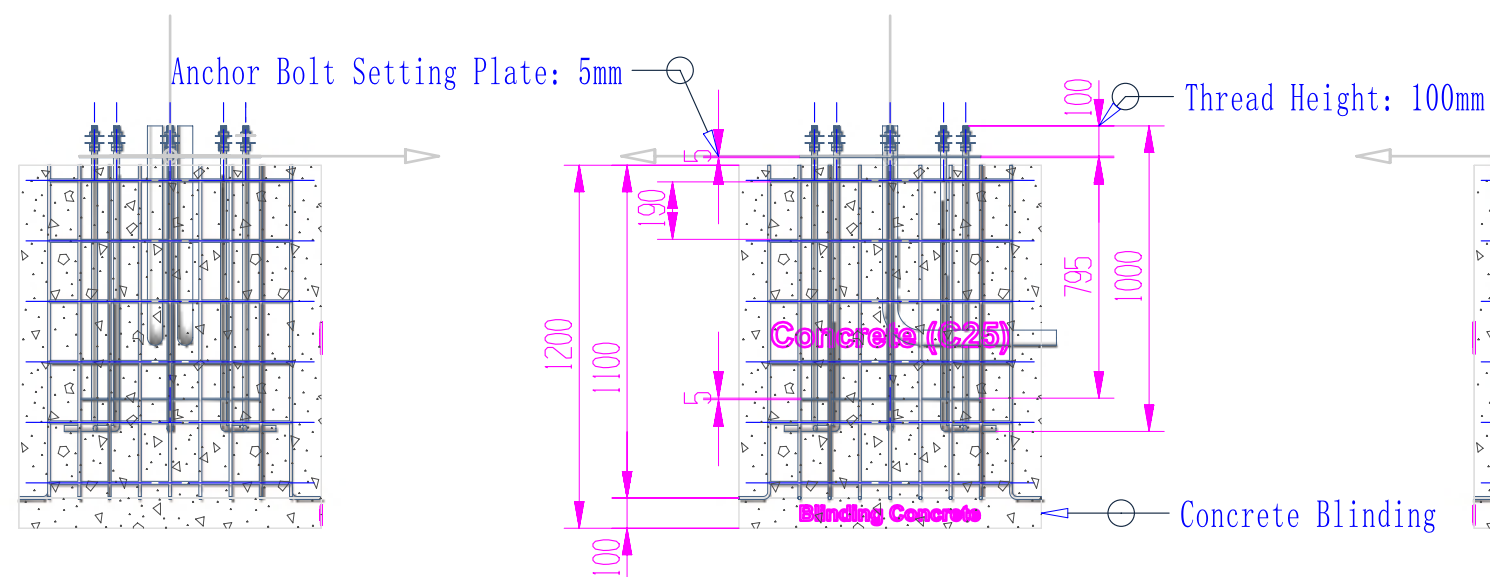


ORTH0@2

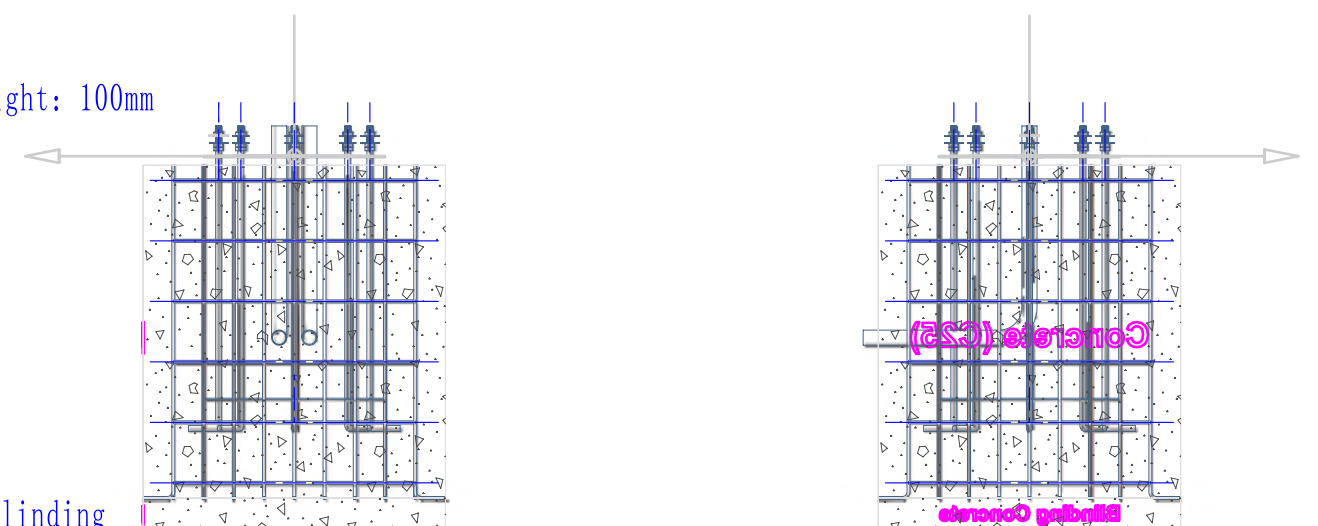


Isometric@6



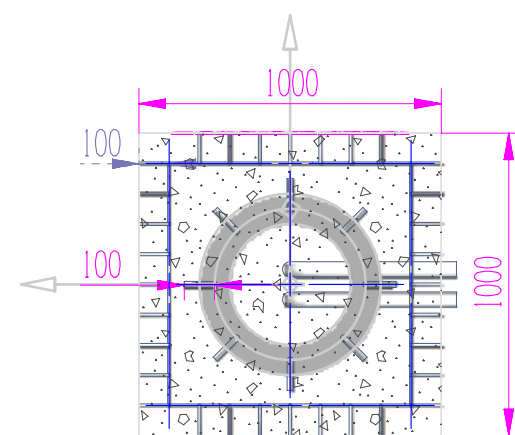
Front@1

ORTH0@5



ORTH0@4

ORTH0@8



ORTH0@3

**Construction Requirements:**

1. Based on the geotechnical investigation report, foundation pouring recommendations must be provided in accordance with the actual geological conditions.
2. Prevent the foundation soil from being adversely affected by factors such as groundwater immersion, excessive disturbance, or prolonged exposure to avoid weakening its mechanical properties. Effective drainage must be implemented during foundation work. Additionally, all loose soil at the bottom of the excavation must be completely removed, and concrete should be poured in a timely manner.
3. Embedded conduits are detailed in relevant specialized drawings.

**Specific Construction Steps:**

1. The construction team shall excavate a pit larger than 1.0m (L) × 1.0m (W) × 1.2m (D) (for reference only; adjust based on local soil conditions).
2. After excavation, first construct a concrete leveling pad (blinding layer).
3. Once the concrete pad has set, place the rebar cage into the pit, ensuring precise positioning.
4. After positioning the rebar cage, install and fix the anchor bolt assembly as well as the conduits for power and low-voltage wiring. Refer to the drawings on this page for the dimensions of the anchor bolt assembly.
5. Pour concrete to fill the entire pit flush with the ground level.
6. After the concrete foundation has fully cured and gained sufficient strength, proceed with the installation of the support column and the thermal enclosure.